

EVERY DAY MADE BETTER®





YOUR DAILY ROUTINE

With Hot Spring® Spas, every day is a chance to start fresh, with heat that awakens, crystal clear water that invites, and innovation that you can feel—inspiring you to do more, experience more, and live more.

At the end of the day, we'll help you get ready for what's next.

UNLEASH YOUR BEST SELF.™

Get Immersed

Why Hot Spring Spas _____	4
Smarter, Cleaner, Simpler, Better Water _____	10
Spa Collections _____	12
Necessaries® _____	34
The Absolute Best Hot Tub Ownership Experience® _____	38
Specifications _____	40
Warranty _____	46
Collection Comparison _____	47

EVERY DAY MADE BETTER®
SINCE 1977



With over four decades of experience and almost two million hot tubs sold, Hot Spring Spas has earned its place as the industry leader by providing customers with the Absolute Best Hot Tub Ownership Experience®, through innovation, uncompromising quality, and a focus on wellness and vitality.

INNOVATION IS AT OUR CORE

Since 1977, when Hot Spring Spas introduced the first fully insulated hot tub with underwater lighting and top-loading filters, we've continued to raise the bar with breakthrough technologies like Moto-Massage®, the world's first moving hydrotherapy jet, and the FreshWater® Salt System, the worry-free way to keep spa water clean, fresh, and natural-feeling. Our newest innovation, FreshWater IQ, applies cutting-edge technology to make water care easier than ever.



WELLNESS, REDEFINED

Wellness is at the core of everything we do. Our hot tubs deliver benefits that extend beyond relaxation to provide well-being, stress relief, and vitality. Enjoy the soothing warmth and hydromassage, alone or with friends and family, for a healthier, happier you.



QUALITY YOU CAN COUNT ON

Every Hot Spring spa is engineered to provide relaxation and vitality, now, and for decades to come. Experience the legendary massage, easy water care, leading energy efficiency, and unmatched customer care that has made us the world's best-selling hot tub brand.



UNLEASH YOUR BEST SELF™

We believe in the power of warm water and massaging jets to help you feel great, sleep well, and stay active. Making a warm soak part of your daily routine provides vitality to Unleash Your Best Self, at work, at home – everywhere!



ENGINEERED TO KEEP YOU MOVING

Thoughtfully placed jets target specific muscle groups from neck and shoulders to back, calves, wrists, and feet. Hot Spring spas deliver a winning combination of buoyancy, heat, and hydromassage to speed up muscle recovery and boost performance during exercise and everyday activities. Warm water massage increases blood flow, improving flexibility, and releasing endorphins that help reduce pain.



SLEEP WELL & WAKE UP ENERGIZED

Relaxing in a hot tub in the evening helps you wind down and de-stress. It also helps physically prepare you for sleep by elevating your body temperature, releasing melatonin, and calming brain activity so you can enjoy a good night's rest naturally and awaken refreshed!



BETTER CONNECTION

Spending distraction-free time in a hot tub invites you to connect on a deeper level with the people who matter most in your life. The benefits flow well beyond just your time in the water, they fill your life with moments that fuel your best relationships.



THE HOT SPRING ADVANTAGES



Legendary Massage

Smooth, ergonomic seating conforms to your body, perfectly positioning you for maximum stress relief. A variety of jets, including the patented Moto-Massage® DX moving jet, are strategically placed to target muscle groups from neck and shoulders to back, calves, wrists, and feet.

Personalized controls further enhance your experience. The Comfort Control® System lets you fine-tune the mix of air and water, while the SmartJet® System lets you customize water flow to different jet groups and seats.

Worry-Free Water Care

Your best hot tub experience begins with pure, crystal-clear water that looks and smells fresh, each and every time.

From innovative, low-maintenance filtration that effectively removes impurities to accessories that reduce contaminants in your fill water, we've simplified water care so you can spend more time enjoying your spa, and less time maintaining it.

The ground-breaking FreshWater® IQ System regularly tests your spa water and displays clear instructions to simplify water care maintenance. It combines the power of salt and the revolutionary technology of our Smart Monitoring System so you can enjoy clean, natural-feeling water and fewer water changes.

Low Monthly Operating Costs

Every component of our Energy Smart® System is designed to work together to ensure your spa is always hot and ready - while keeping energy costs low.

With features like high-density insulation that locks in heat; our SilentFlo 5000® Circulation Pump that uses less energy than a 40-watt light bulb; a patented pump shroud that recycles heat to reduce energy consumption; and custom-fit WeatherPro® covers with an exclusive hinge seal, all Hot Spring spa models meet or exceed stringent California Energy Commission (CEC) and APSP 14 energy efficiency standards for portable spas.

MONTHLY COST ESTIMATES

Rate x Kilowatt Hour

City	Temp	kWh	Rate	Cost
Miami, FL	75 °F / 23 °C	100	\$0.10	\$10.00
Las Vegas, NV	70 °F / 21 °C	122	\$0.08	\$9.76
Tulsa, OK	60 °F / 15 °C	166	\$0.08	\$13.28
Seattle, WA	55 °F / 12 °C	188	\$0.08	\$15.04
Chicago, IL	50 °F / 10 °C	210	\$0.10	\$21.00
Calgary, Canada*	40 °F / 4 °C	253	\$0.11	\$27.83

Temp: Approximate annual mean ambient temperature
 kWh: Approximate average kilowatt hours per month to operate spa**
 Rate: Approximate average rate charged per kilowatt hour in dollars***
 Cost: Approximate average monthly energy cost to operate spa**

* In Canadian dollars; based on average rates from the Alberta Utilities Commission, March 2022.

** Based on a medium-sized Highlife Collection spa set at 102 °F used six times per week – 15 minutes with jets on and 15 minutes with jets off during each use. Testing conducted by independent third-party certified laboratory in a controlled environmental chamber at multiple ambient temperatures using continuous data acquisition monitoring of watts, temperature and humidity, with all equipment calibrated to ensure data accuracy. Individual energy consumption will vary depending on set water temperature, actual consumer usage patterns, and actual environmental ambient conditions.

*** Based on rates from the U.S. Energy Information Administration, November 2021. Rates subject to change. Check with your local electricity provider for your current rate.

LIQUID JUST GOT SMARTER

Introducing FreshWater® IQ, the most intelligent salt water system on the planet.

FreshWater IQ is a smart, in-line water care system that regularly tests your spa water and displays clear instructions to help you maintain clean, natural-feeling water. Now you can tell at a glance when chemicals are needed, taking the guesswork out of keeping your spa water balanced and ready to enjoy.



freshwater® IQ

Smarter

WE PUT THE IQ IN LIQUID

Our patented smart monitoring technology, found only in the FreshWater IQ System, regularly tests your water every hour with more accuracy than test strips, and provides clear, on-screen instructions when adjustments are needed. With a glance at your spa's control panel, you'll see what's needed to keep your spa water fresh, balanced, and ready to enjoy.

Cleaner

BETTER WATER. FEWER ADDITIVES.

FreshWater IQ uses the FreshWater Salt System to generate the perfect amount of chlorine. With fewer chemicals, water feels softer and gentler on eyes and skin, and can stay clean and fresh up to a full year*, conserving water and saving money. The FreshWater Salt System works with our proprietary 100% no-bypass filtration system to help you experience the best spa water possible.

Simpler

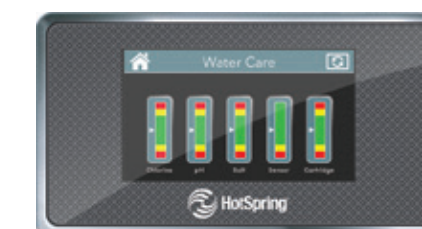
FINALLY, WATER CARE MADE EASY

Take the guesswork out of water care. Easy-to-follow on-screen recommendations help you maintain clean, natural-feeling water.

Better

THE MOST COMPREHENSIVE WATER CARE SYSTEM AVAILABLE

Fully integrated and easy-to-use, FreshWater IQ helps you keep your spa water clean, balanced, and natural-feeling for *The Absolute Best Hot Tub Ownership Experience*®.



*Many factors affect the life of spa water, such as bather load and water chemistry. When these factors are accounted for and the spa is properly maintained, the FreshWater Salt System will keep water clean and clear for up to a full year.

CHOOSE YOUR SPA

With three distinct Collections and a wide range of models, sizes, and colors, there's a Hot Spring® spa that fits you and your space.



HIGHLIFE® COLLECTION

Our best to unleash your best. Legendary massage, leading energy efficiency, and crystal clear water for the ultimate hydrotherapy experience.



LIMELIGHT® COLLECTION

Bring your hot tub experience to new levels with the perfect balance of form, function, and value.



HOT SPOT® COLLECTION

The quality, innovation, and performance you expect from a Hot Spring spa, priced to fit your budget.



HIGHLIFE® COLLECTION

Our Best. To Unleash Your Best.

For those who expect the most out of life, the Highlife Collection is everything a hot tub can be. Exceptionally designed. Intentionally engineered. Generously appointed. It's our very best.



Cabinet: Blackwood
Shell: Alpine White



Cabinet: Java
Shell: Alpine White

LEGENDARY MASSAGE



BACK MASSAGE LIKE NO OTHER

Our very best spas feature our most legendary innovation—Moto-Massage® DX jet. Patented moving jets provide powerful water streams that sweep up and down your back for a massage like no other.



PERFECT POSITIONING

Sculpted seats cradle your body's contours in a natural position to help relieve pressure and deliver a better spa experience. Each jet is perfectly and intentionally positioned to target specific muscles, resulting in a distinctive massage from your neck to your shoulders, back, wrists, calves, and feet.



PERSONALIZED CONTROL

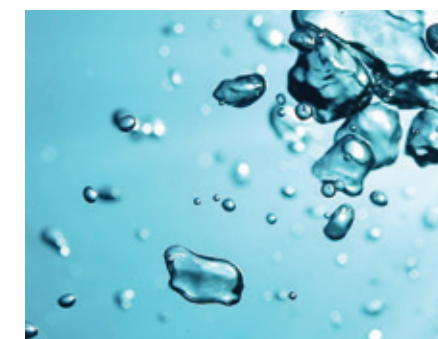
Simply adjust the jet face with the Comfort Control® System to personalize each soak with a powerful massage or a soft touch. Customize the waterflow to different jet groups or seats throughout the spa with the SmartJet® System.

EASY WATER CARE



SMARTER. CLEANER. SIMPLER. BETTER.

Available on all Highlife Collection spas, FreshWater® IQ is a smart, in-line, water care system that regularly tests your spa water and displays clear instructions to help you maintain clean, natural-feeling water. At a glance, you can tell when chemicals are needed, taking the guesswork out of keeping your spa water balanced and ready to enjoy.



100% CLEAN, 100% OF THE TIME

All water in a Highlife Collection spa is filtered 100% of the time, meaning every drop of water passes through filters, even when you're soaking with the jets on.

The key is our proprietary no-bypass filtration system paired with our exclusive high-flow Tri-X® filters featuring 3D technology that provides a more effective filtration area than traditional paper filters of the same size to filter significantly more water.

Every drop of water is cleaned every time it moves, no exceptions. You simply will not find cleaner water in any other spa.

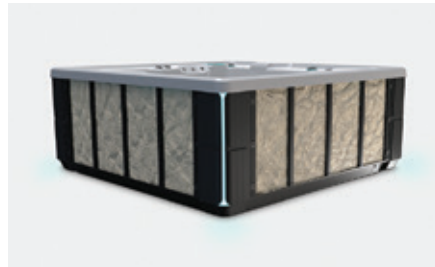


HIGHLIFE® COLLECTION

ENERGY SMART® SYSTEM

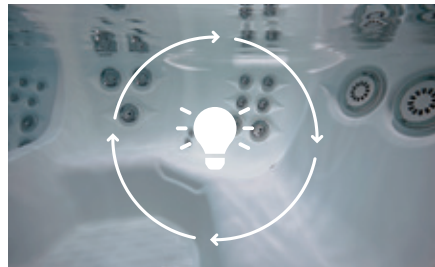
Keeps Spa Water Hot and Energy Bills Low

Through a combination of innovations, Highlife Collection spas offer the very best in energy-saving design so that your spa will be hot and ready when you are.



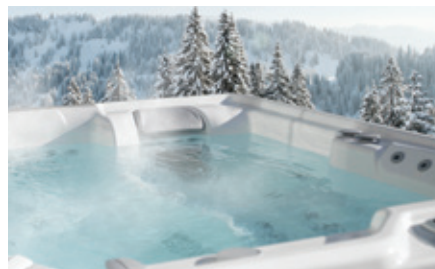
ENHANCED ENERGY EFFICIENCY

Built for durability and long life, each Highlife Collection spa features a polymer structure, multiple layers of high density foam insulation, and an insulated base pan, eliminating gaps and voids while locking in heat and maximizing energy efficiency.



DEDICATED CIRCULATION PUMP

The SilentFlo 5000® circulation pump is a dedicated pump that continuously circulates spa water 24 hours a day, while using less energy than a 40-watt light bulb. This eliminates the need to rely on high-powered jet pumps to circulate water, reducing energy costs and wear.



RECYCLED HEAT

A Hot Spring-exclusive patented pump shroud captures heat generated in the spa's equipment compartment and recycles it, transferring heat to the water to reduce energy consumption.



LOGO LIGHT INDICATOR

Be confident your spa is hot and ready before you even step outside with the Ready Indicator Light in the Hot Spring® logo. It also doubles as a valuable diagnostic tool, letting you know when your spa needs attention.

STRIKINGLY BEAUTIFUL

Bold, Yet Elegant. Fresh, Yet Timeless. Graceful, Yet Powerful.

The Highlife® Collection redefines how a hot tub looks. Elegantly contoured corners reveal accent lights that beckon you closer. Stainless steel and brushed metal finishes add richness and refinement. Clean lines, elegant appointments, and durable materials all work together in harmony to create a unique look that both inspires and endures.

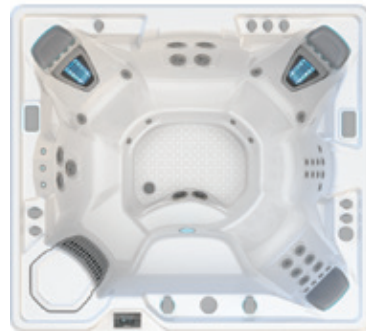


Cabinet: Linen
Shell: Alpine White



Cabinet: Blackwood
Shell: Platinum

HIGHLIFE® COLLECTION



GRANDEE®

7 Seats
49 Jets
8'4" x 7'7" x 38"



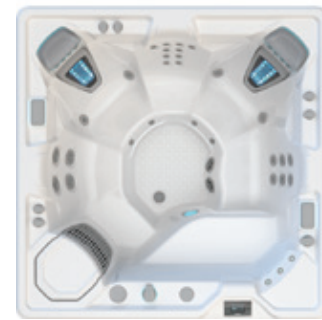
ENVOY®

5 Seats
55 Jets
8'4" x 7'7" x 38"



ARIA®

5 Seats
42 Jets
7'3" x 7'3" x 36"



VANGUARD®

6 Seats
42 Jets
7'3" x 7'3" x 36"



SOVEREIGN®

5 Seats
32 Jets
6'8" x 7'9" x 33"



PRODIGY®

5 Seats
28 Jets
7' x 6'6" x 33"



JETSETTER® LX

3 Seats
30 Jets
7' x 5'8" x 33"



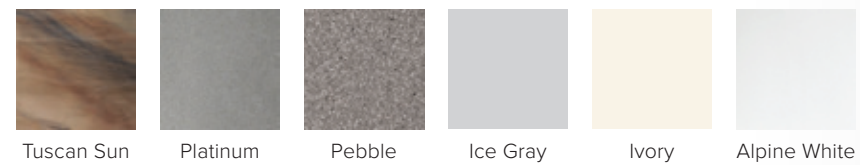
JETSETTER®

3 Seats
22 Jets
7' x 5'8" x 33"

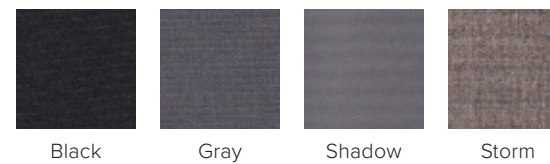
CABINETS



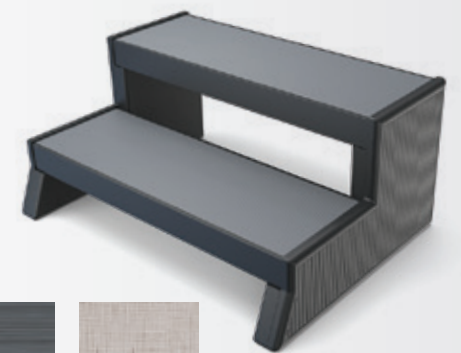
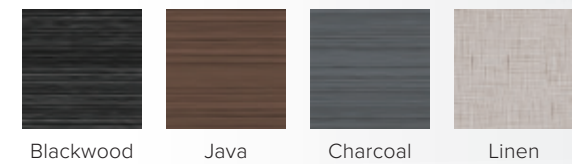
SHELLS



COVERS



STEPS



COMBINATION OPTIONS

Cabinet	Blackwood	Java	Charcoal	Linen	Brushed Nickel
Shell	Alpine White Ice Gray Platinum	Alpine White Ice Gray Ivory Tuscan Sun Pebble	Alpine White Ice Gray Platinum Tuscan Sun Pebble	Alpine White Ivory Tuscan Sun Pebble	Alpine White Ice Gray Platinum
Cover	Black	Storm	Gray	Shadow	Black

Actual colors and products may vary from print representation. See dealer to verify.



VISUALIZE THESE SPAS IN YOUR SPACE

Download the free Virtual View™ AR app and use augmented reality to see how a Hot Spring spa can transform your space.



LIMELIGHT® COLLECTION

Advanced Design and Features. A Cut Above.

Featuring fresh, clean lines, mood lighting, and sleek corner accents, Limelight Collection spas stand out from the crowd. Best-in-class features and a legendary Hot Spring® experience make these spas a cut above the rest.



Cabinet: Espresso
Shell: Alpine White



Cabinet: Coastal Gray
Shell: Ice Gray

LIMELIGHT® COLLECTION



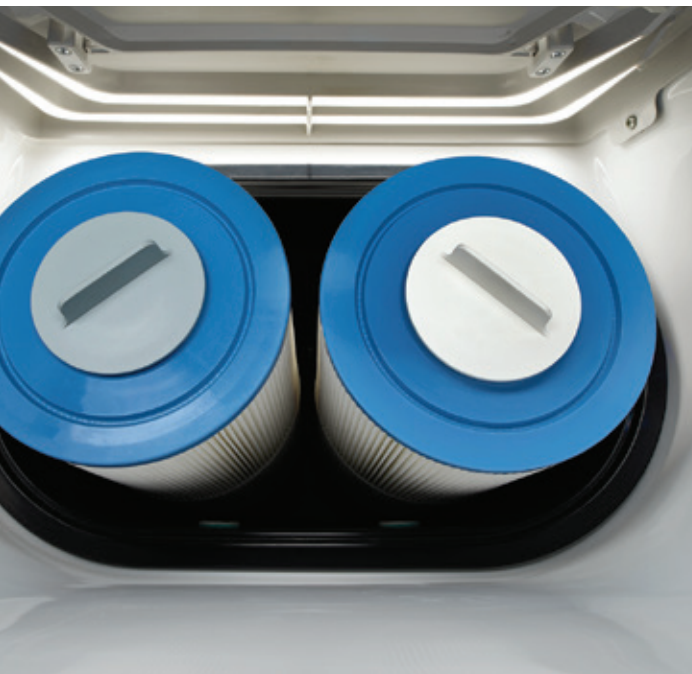
Personalized Massage

Thoughtfully placed jets target specific muscle groups, from your neck to your shoulders, back, calves, wrists, and feet. In Limelight Collection spas, you have a variety of choices for a complete, full-body massage in sculpted seats that position your body to relieve stress and keep you in place.

Our Comfort Control® System lets you adjust intensity, while our SmartJet® System directs water flow to specific jet groups for a truly personalized massage experience.

Energy Efficiency Elevated

Exclusive FiberCor® insulation fills the cabinet completely to a density four times greater than the half-pound foam used in most spas on the market. Combined with Energy Smart® features like the SilentFlo 5000® Circulation Pump, a patented pump shroud that recycles heat, and the No-Fault® heater, Limelight Collection spas keep water hot and energy costs low.



Dual-Action Filtration

Our unique two-filter design provides for more effective, constant filtration. One filter is dedicated to the circulation pump. The other is dedicated to the jet pumps to clean water when the jets are running. Working together, these two filters provide more total effective filtration area to keep water cleaner with less maintenance.

See Things in a Whole New Light

Limelight Collection spas feature our highest count of lights for a stylish soak. The interior lighting system features multiple points of light placed to accent the contours of the spa shell. Two exterior LED light bars integrate with the front corners of the spa, creating a uniquely elegant look that is unlike any other. Match the color to your mood by selecting the hue and brightness of your choice or cycle through all six vibrant choices.



READY WHEN YOU ARE

You'll always know when your spa is ready – even from a distance. A color-coded Ready Indicator Light shows at a glance when your water is at the set temperature. The light will indicate if your spa needs maintenance, a filter change, or service.



LIMELIGHT® COLLECTION



PRISM™

7 Seats
73 Jets
9'2" x 7'7" x 38"



PULSE®

7 Seats
49 Jets
7'5" x 7'5" x 38"



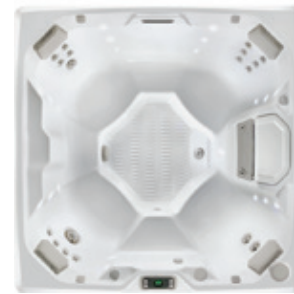
FLAIR®

6 Seats
43 Jets
7' x 7' x 36"



FLASH™

7 Seats
41 Jets
7' x 7' x 36"



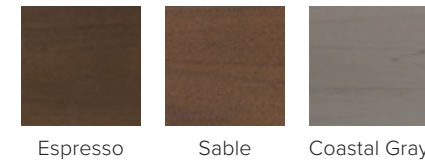
BEAM™

4 Seats
19 Jets
6' 8" x 6' 8" x 33"



Cabinet: Sable
Shell: Alpine White

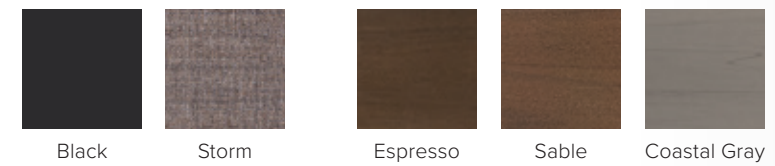
CABINETS



SHELLS



COVERS



STEPS



COMBINATION OPTIONS

Cabinet	Espresso	Sable	Coastal Gray
Shell	Alpine White Ice Gray Desert Platinum Tuscan Sun	Alpine White Ice Gray Desert Platinum Tuscan Sun	Alpine White Ice Gray Desert Platinum Tuscan Sun
Cover	Storm	Storm	Storm

Actual colors and products may vary from print representation. See dealer to verify.



VISUALIZE THESE SPAS IN YOUR SPACE

Download the free Virtual View™ AR app and use augmented reality to see how a Hot Spring spa can transform your space.



HOT SPOT® COLLECTION

**Quality, Performance, and Value.
Maximize Your Everyday.**

Eye-catching design, unique massage, and trusted quality from the industry leader. Hot Spot Collection spas help you maximize every day for years to come.



Cabinet: Storm
Shell: Alpine White



Cabinet: Havana
Shell: Alpine White

HOT SPOT® COLLECTION



Legacy of Legendary Massage

Experience the complete massage you expect from a Hot Spring® spa in the Hot Spot Collection. A variety of jet types, powered by our reliable Wavemaster® pump, work together with personalized control to deliver a legendary massage.

The SX and TX models feature the exclusive, revolutionary Moto-Massage® moving jet with a warm stream of water that sweeps up and down the length of your back for a truly unparalleled hydromassage experience.



Easy Water Care

The simpler, cleaner, fresher way to hot tub™. The FreshWater® Salt System is a revolution in water care. Water is sanitized with a titanium cartridge that automatically generates chlorine from salt for soft, natural-feeling water without harsh odors, itchy skin, or irritated eyes. This breakthrough technology is the simple way to keep your hot tub water clean and feeling soft for up to a full year.*



Energy Efficiency

Keeping water hot and energy costs low, each Hot Spot Collection spa features FiberCor® insulation, completely filling the cabinet to a density four times greater than the half-pound foam used in most spas on the market. Paired with custom-fit WeatherPro® covers with an exclusive hinge seal, you'll soak with confidence knowing your Hot Spot Collection spa meets or exceeds stringent California Energy Commission (CEC) and APSP 14 energy efficiency standards for portable spas.



EYE-CATCHING DESIGN

Each spa creates a dynamic backyard focal point with distinctive design details. Subtly embossed cabinets give the look of natural materials yet provide the durability of advanced composites. Choose between three stunning cabinet colors that can be combined with a variety of shell finishes to create a look that complements your home.

Details Deliver a Difference



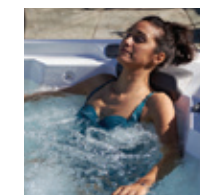
Multi-color LED lights inside and out** accentuate the design of your spa while setting the mood with a single color or revolving display.



Sculpted seating contours your body and integrated pillows cradle your head and neck to create a comfortable soaking experience.



Convenient floor drain makes scheduled water changes a breeze.



Backed by a decades-long reputation for outstanding quality and value, you can count on years of enjoyment and reliability with your Hot Spot Collection hot tub.



The large bar top offers space to place your favorite beverage, phone, or other hot tubbing accessory within reach throughout your soak.

*Many factors affect the life of spa water, such as bather load and water chemistry. When spa water is properly maintained considering these factors, a 3-pack of FreshWater Salt System cartridges will keep water clean and clear for up to a full year.

**Exterior lighting not available on SX and TX models.

HOT SPOT® COLLECTION



RHYTHM®

7 Seats
40 Jets
7' x 7' x 36"



RELAY®

6 Seats
40 Jets
7' x 7' x 36"



PACE™

5 Seats
24 Jets
6'10" x 6'10" x 33"



STRIDE®

3 Seats
20 Jets
7' x 5'5" x 29"



SX

3 Seats
18 Jets
6' x 6'5" x 33"



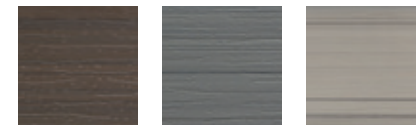
TX

2 Seats
11 Jets
6' x 6' x 29"



Cabinet: Havana
Shell: Alpine White

CABINETS



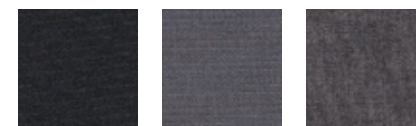
Havana Storm Almond

SHELLS



Tuscan Sun Pebble Pearl Alpine White

COVERS



Black Gray Chestnut

STEPS



Havana Storm Almond



COMBINATION OPTIONS

Cabinet	Havana	Storm	Almond
Shell	Alpine White Pearl Pebble Tuscan Sun	Alpine White Pearl Pebble Tuscan Sun	Alpine White Pearl Pebble Tuscan Sun
Cover	Black	Gray	Chestnut

Actual colors and products may vary from print representation. See dealer to verify.



VISUALIZE THESE SPAS IN YOUR SPACE

Download the free Virtual View™ AR app and use augmented reality to see how a Hot Spring spa can transform your space.



NECESSARIES®

Upgrade your hot tub experience with high-quality accessories exclusively designed for your Hot Spring spa.



WeatherPro® Covers

Available in contemporary shades to complement any home and outdoor space, WeatherPro covers feature durable, fade-resistant materials that provide superior resistance to the elements, while meeting the rigorous energy standards set by the California Energy Commission (CEC) for portable spas. These custom-fit covers lock in heat to save energy and ensure that your spa stays warm and ready for your next soak.



Cover Lifters

Our patented cover lifter systems make opening and closing the spa cover simple, helping maintain your hot tub, extending the life of your cover, and, most importantly, making it easier for you to enjoy your spa every day.



COVERCRADLE®

For the ultimate in ease, this robust system offers an ultra-smooth gliding mechanism and the power of pneumatic springs to support covers on even our largest spas.

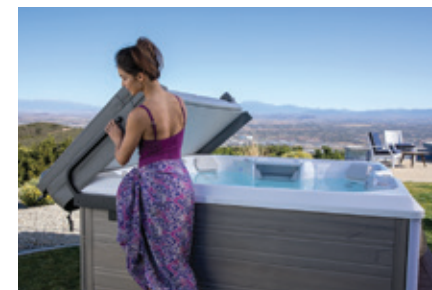
Requires 24" minimum clearance.



UPRITE®

Ideal for tight spaces and recessed spa installations, the UpRite cover lifter also provides an element of privacy by holding your folded cover in a vertical position.

Requires just 7" minimum clearance.



LIFT 'N GLIDE®

The Lift 'n Glide is easy to operate – simply lift the cover, glide it back, and enjoy your soak.

Requires 14" minimum clearance.



Spa Side Enhancements

Thoughtful spa side additions help elevate your hot tubbing experience.

UMBRELLA

Shade your spa with the 360° rotatable spa side umbrella, featuring a 9'9" diameter canopy.

TOWEL TREE

Keep your towel within reach on the stylish and easy-to-assemble aluminum towel tree.

HANDRAIL

Safely enter and exit your spa with our sturdy handrail that swings to allow access from inside and outside the spa. It also features a battery-powered LED light for added convenience and safety.

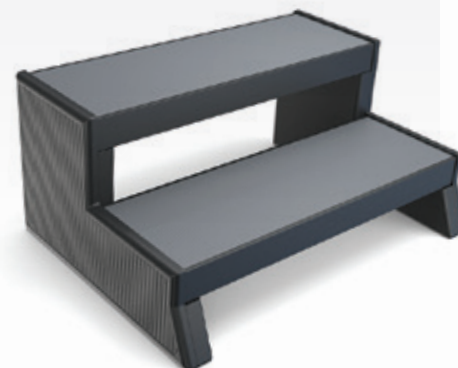
Steps

Complete your Hot Spring spa set up with steps that make it easier to get into and out of your hot tub. Our steps are designed to match your Hot Spring spa with coordinating colors and cabinet matching materials.

Limelight® Collection



Highlife® Collection



Hot Spot® Collection



Technology that Simplifies

CONNECTED SPA KIT & HOT SPRING® SPAS APP

Control and monitor your spa from your smartphone with the Hot Spring Spas app. Powered by the Connect Spa Kit, the app allows you to control your spa any time from virtually anywhere. Remotely control spa functions like FreshWater® Salt System, jets, lighting, and more. Have peace of mind knowing what's happening with your spa even when you're not at home. Monitor regular maintenance needs and locate your closest dealer to schedule service. All from your mobile device.

Available on most Hot Spring spa models built after 2014.

The Connected Spa Kit is a remote system that relies on connections of Wi-Fi components between the spa and a home network. The system is for the convenience of the hot tub owner and does not replace regular physical inspection and/or maintenance of the hot tub.



Technology that Enhances

MUSIC OPTIONS

Enjoy audio entertainment with your Hot Spring spa. When you opt for a music-ready spa, you get built-in speakers. You can add a wireless Bluetooth® audio system, which allows you to connect your spa to your home entertainment system and other devices. Kick up your music experience with a subwoofer, too, and you might never leave the water.



Technology that Invigorates

COOL WATER TEMPERATURES

Take a revitalizing dip on a hot day, or enjoy cold-water therapy any time with the CoolZone™ System that can chill the water as low as 60° F. Depending on ambient temperature, the system can also improve energy efficiency during normal operation by reducing the amount of time the No-Fault® heater operates. This can translate to additional energy cost savings.

Available on select Highlife and Limelight Collection models.





THE ABSOLUTE BEST HOT TUB OWNERSHIP EXPERIENCE®

Hot Spring Leads The Way

As the world's best-selling spa brand, Hot Spring earned its reputation for quality and innovation. But we don't stop there. Our focus is on providing The Absolute Best Hot Tub Ownership Experience® through unparalleled massage, worry-free water care, energy saving features, and unmatched customer care. With a Hot Spring spa, you can relax today, tomorrow, and long after your purchase.

45+ Years of Excellence | 1.8 Million+ Spas Sold | 50 States & 70 Countries

The Best Retailer Partners

Our group of authorized Hot Spring dealers provides unparalleled customer care as you shop for, purchase, and enjoy your new hot tub. With sales and service centers located worldwide, we have the most extensive support network in the industry.

A Brand You Can Trust

For more than 45 years, we've built our reputation on quality and have earned TradeCertified™ certification for providing a superior ownership experience every year since the award's inception in 2005.



Hot Spring Spas is a brand of Watkins Wellness, the leader in hot tub and aquatic fitness products. Watkins Wellness is part of MASCO Corporation, a Fortune 500 company whose family of quality home products includes:



“We love our spa! It helps us relax and wipeout the stress of the day.”



Paul - Surprise, AZ

See what real Hot Spring owners are saying at hotspring.com/reviews

HIGHLIFE® COLLECTION

	GRANDEE®	ENVOY®	ARIA®	VANGUARD®
Seat Capacity	7	5	5	6
Dimensions <i>(Subject to Change)</i>	8'4" x 7'7" x 38" 254 cm x 231 cm x 97cm	8'4" x 7'7" x 38" 254 cm x 231 cm x 97 cm	7'3" x 7'3" x 36" 221 cm x 221 cm x 91 cm	7'3" x 7'3" x 36" 221 cm x 221 cm x 91 cm
Jet Count	49	55	42	42
Water Capacity	455 g / 1725 L	455 g / 1725 L	365 g / 1400 L	375 g / 1425 L
Dry Weight	790 lb / 360 kg	785 lb / 355 kg	680 lb / 310 kg	710 lb / 320 kg
Filled Weight	5810 lb / 2645 kg	5455 lb / 2480 kg	4600 lb / 2110 kg	4890 lb / 2225 kg
Shell Colors	Alpine White, Ice Gray, Ivory, Pebble, Platinum, Tuscan Sun	Alpine White, Ice Gray, Ivory, Pebble, Platinum, Tuscan Sun	Alpine White, Ice Gray, Ivory, Pebble, Platinum, Tuscan Sun	Alpine White, Ice Gray, Ivory, Pebble, Platinum, Tuscan Sun
Cabinet Colors	Blackwood, Brushed Nickel, Charcoal, Java, Linen	Blackwood, Brushed Nickel, Charcoal, Java, Linen	Blackwood, Brushed Nickel, Charcoal, Java, Linen	Blackwood, Brushed Nickel, Charcoal, Java, Linen
Cabinet Type	Highlife® All-Weather Low Maintenance	Highlife® All-Weather Low Maintenance	Highlife® All-Weather Low Maintenance	Highlife® All-Weather Low Maintenance
Step Type	Highlife Step: Blackwood, Charcoal, Java, Linen	Highlife Step: Blackwood, Charcoal, Java, Linen	Highlife Step: Blackwood, Charcoal, Java, Linen	Highlife Step: Blackwood, Charcoal, Java, Linen
Cover Colors	Black, Gray, Shadow, Storm	Black, Gray, Shadow, Storm	Black, Gray, Shadow, Storm	Black, Gray, Shadow, Storm
Cover Lifters	CoverCradle®, CoverCradle® II, Lift n' Glide®, Uprite®	CoverCradle®, CoverCradle® II, Lift n' Glide®, Uprite®	CoverCradle®, CoverCradle® II, Lift n' Glide®, Uprite®	CoverCradle®, CoverCradle® II, Lift n' Glide®, Uprite®
Bottom Seal	Polymeric Molded Base Pan	Polymeric Molded Base Pan	Polymeric Molded Base Pan	Polymeric Molded Base Pan
Lighting	Luminescence® Multi-Color LED with 4 Zone Mood Settings	Luminescence® Multi-Color LED with 4 Zone Mood Settings	Luminescence® Multi-Color LED with 4 Zone Mood Settings	Luminescence® Multi-Color LED with 4 Zone Mood Settings
Logo Light	Hot Spring Logo Badge Diagnostic Self-Dimming Status Light	Hot Spring Logo Badge Diagnostic Self-Dimming Status Light	Hot Spring Logo Badge Diagnostic Self-Dimming Status Light	Hot Spring Logo Badge Diagnostic Self-Dimming Status Light
Jet Pump 1	Wavemaster® 9000 1-Speed 2.5 HP, Continuous Duty (5.2 HP, Breakdown Torque)	Wavemaster® 9000 1-Speed 2.5 HP, Continuous Duty (5.2 HP, Breakdown Torque)	Wavemaster® 9000 1-Speed 2.5 HP, Continuous Duty (5.2 HP, Breakdown Torque)	Wavemaster® 9000 1-Speed 2.5 HP, Continuous Duty (5.2 HP, Breakdown Torque)
Jet Pump 2	Wavemaster® 9200 2-Speed 2.5 HP, Continuous Duty (5.2 HP, Breakdown Torque)	Wavemaster® 9200 2-Speed 2.5 HP, Continuous Duty (5.2 HP, Breakdown Torque)	Wavemaster® 9200 2-Speed 2.5 HP, Continuous Duty (5.2 HP, Breakdown Torque)	Wavemaster® 9200 2-Speed 2.5 HP, Continuous Duty (5.2 HP, Breakdown Torque)
Jets	2 Moto-Massage® DX Jets (2) 2 SoothingStream® Jets 2 JetStream® Jets 2 Hydromassage Rotary Jets 2 Hydromassage Directional Jets 10 Hydrostream® Directional Jets 26 Precision® Directional Jets	2 Moto-Massage® DX Jets (2) 2 SoothingStream® Jets 5 JetStream® Jets 2 Hydromassage Rotary Jets 2 Hydromassage Directional Jets 6 Hydrostream® Directional Jets 4 Precision® Rotary Jets 30 Precision® Directional Jets	2 Moto-Massage® DX Jets (2) 2 SoothingStream® Jets 4 JetStream® Jets 2 Hydromassage Rotary Jets 2 Hydrostream® Directional Jets 2 Precision® Rotary Jets 26 Precision® Directional Jets	2 Moto-Massage® DX Jets (2) 2 SoothingStream® Jets 2 JetStream® Jets 2 Hydromassage Rotary Jets 10 Hydrostream® Directional Jets 22 Precision® Directional Jets
Controls	IQ 2020® Color LCD Touchscreen	IQ 2020® Color LCD Touchscreen	IQ 2020® Color LCD Touchscreen	IQ 2020® Color LCD Touchscreen
Circulation Pump	SilentFlo 5000® Quiet Continuous Filtration	SilentFlo 5000® Quiet Continuous Filtration	SilentFlo 5000® Quiet Continuous Filtration	SilentFlo 5000® Quiet Continuous Filtration
Heater	No-Fault® 4000w/230v	No-Fault® 4000w/230v	No-Fault® 4000w/230v	No-Fault® 4000w/230v
Filtration	5 Tri-X® 65 sq ft Filters, 325 sq ft Total Surface Area, Top-Loading, 100% No-Bypass Filtration	5 Tri-X® 65 sq ft Filters, 325 sq ft Total Surface Area, Top-Loading, 100% No-Bypass Filtration	5 Tri-X® 65 sq ft Filters, 325 sq ft Total Surface Area, Top-Loading, 100% No-Bypass Filtration	5 Tri-X® 65 sq ft Filters, 325 sq ft Total Surface Area, Top-Loading, 100% No-Bypass Filtration
Water Care System	FreshWater® Salt System Included, Smart Monitoring System Ready	FreshWater® Salt System Included, Smart Monitoring System Ready	FreshWater® Salt System Included, Smart Monitoring System Ready	FreshWater® Salt System Included, Smart Monitoring System Ready
Electrical Requirements	230v/50 amp, 60 Hz	230v/50 amp, 60 Hz	230v/50 amp, 60 Hz	230v/50 amp, 60 Hz
GFCI Protected Sub-Panel	Included	Included	Included	Included
Music System (Optional)	Wireless Audio System with Bluetooth® Technology	Wireless Audio System with Bluetooth® Technology	Wireless Audio System with Bluetooth® Technology	Wireless Audio System with Bluetooth® Technology
Water Features	BellaFontana® Fountain	BellaFontana® Fountain	BellaFontana® Fountain	BellaFontana® Fountain

	SOVEREIGN®	PRODIGY®	JETSETTER® LX	JETSETTER®
Seat Capacity	5	5	3	3
Dimensions <i>(Subject to Change)</i>	6'8" x 7'9" x 33" 203 cm x 236 cm x 84 cm	7'0" x 6'6" x 33" 213 cm x 198 cm x 84 cm	7'0" x 5'8" x 33" 213 cm x 173 cm x 84 cm	7'0" x 5'8" x 33" 213 cm x 173 cm x 84 cm
Jet Count	32	28	30	22
Water Capacity	330 g / 1250 L	270 g / 1025 L	250 g / 950 L	245 g / 925 L
Dry Weight	600 lb / 270 kg	575 lb / 260 kg	515 lb / 235 kg	500 lb / 225 kg
Filled Weight	4230 lb / 1920 kg	3705 lb / 1685 kg	3125 lb / 1425 kg	3070 lb / 1390 kg
Shell Colors	Alpine White, Ice Gray, Ivory, Pebble, Platinum, Tuscan Sun	Alpine White, Ice Gray, Ivory, Pebble, Platinum, Tuscan Sun	Alpine White, Ice Gray, Ivory, Pebble, Platinum, Tuscan Sun	Alpine White, Ice Gray, Ivory, Pebble, Platinum, Tuscan Sun
Cabinet Colors	Blackwood, Brushed Nickel, Charcoal, Java, Linen	Blackwood, Brushed Nickel, Charcoal, Java, Linen	Blackwood, Brushed Nickel, Charcoal, Java, Linen	Blackwood, Brushed Nickel, Charcoal, Java, Linen
Cabinet Type	Highlife® All-Weather Low Maintenance	Highlife® All-Weather Low Maintenance	Highlife® All-Weather Low Maintenance	Highlife® All-Weather Low Maintenance
Step Type	Highlife Step: Blackwood, Charcoal, Java, Linen	Highlife Step: Blackwood, Charcoal, Java, Linen	Highlife Step: Blackwood, Charcoal, Java, Linen	Highlife Step: Blackwood, Charcoal, Java, Linen
Cover Colors	Black, Gray, Shadow, Storm	Black, Gray, Shadow, Storm	Black, Gray, Shadow, Storm	Black, Gray, Shadow, Storm
Cover Lifters	CoverCradle®, CoverCradle® II, Lift n' Glide®, Uprite®	CoverCradle®, CoverCradle® II, Lift n' Glide®	CoverCradle®, CoverCradle® II, Lift n' Glide®	CoverCradle®, CoverCradle® II, Lift n' Glide®
Bottom Seal	Polymeric Molded Base Pan	Polymeric Molded Base Pan	Polymeric Molded Base Pan	Polymeric Molded Base Pan
Lighting	Luminescence® Multi-Color LED with 4 Zone Mood Settings	Luminescence® Multi-Color LED with 4 Zone Mood Settings	Luminescence® Multi-Color LED with 4 Zone Mood Settings	Luminescence® Multi-Color LED with 4 Zone Mood Settings
Logo Light	Hot Spring Logo Badge Diagnostic Self-Dimming Status Light	Hot Spring Logo Badge Diagnostic Self-Dimming Status Light	Hot Spring Logo Badge Diagnostic Self-Dimming Status Light	Hot Spring Logo Badge Diagnostic Self-Dimming Status Light
Jet Pump 1	Wavemaster® 9200 2-Speed 2.5 HP, Continuous Duty (5.2 HP, Breakdown Torque)	Wavemaster® 9200 2-Speed 2.5 HP, Continuous Duty (5.2 HP, Breakdown Torque)	Wavemaster® 9000 1-Speed 2.5 HP, Continuous Duty (5.2 HP, Breakdown Torque)	Wavemaster® 7000 1-Speed 1.65 HP, Continuous Duty (3.5 HP, Breakdown Torque)
Jet Pump 2	N/A	N/A	N/A	N/A
Jets	1 Moto-Massage® DX Jet (2) 2 SoothingStream® Jets 3 JetStream® Jets 2 Hydromassage Rotary Jets 1 Hydrostream® Directional Jet 2 Precision® Rotary Jets 20 Precision® Directional Jets	1 Moto-Massage® DX Jet (2) 2 SoothingStream® Jets 1 JetStream® Jet 2 Hydromassage Rotary Jets 1 Hydromassage Directional Jet 4 Hydrostream® Directional Jets 16 Precision® Directional Jets	1 Moto-Massage® DX Jet (2) 2 SoothingStream® Jets 3 JetStream® Jets 1 Hydromassage Rotary Jet 2 Precision® Rotary Jets 20 Precision® Directional Jets	1 Moto-Massage® DX Jet (2) 2 SoothingStream® Jets 1 JetStream® Jet 1 Hydromassage® Rotary Jet 2 Precision® Rotary Jets 14 Precision® Directional Jets
Controls	IQ 2020® Color LCD Touchscreen	IQ 2020® Color LCD Touchscreen	IQ 2020® Color LCD Touchscreen	IQ 2020® Color LCD Touchscreen
Circulation Pump	SilentFlo 5000® Quiet Continuous Filtration	SilentFlo 5000® Quiet Continuous Filtration	SilentFlo 5000® Quiet Continuous Filtration	SilentFlo 5000® Quiet Continuous Filtration
Heater	No-Fault® 6000w/230v	No-Fault® 6000w/230v	No-Fault® 6000w/230v	No-Fault® 1500w/115v or 6000w/230v
Filtration	3 Tri-X® 65 sq ft Filters, 195 sq ft Total Surface Area, Top-Loading, 100% No-Bypass Filtration	3 Tri-X® 65 sq ft Filters, 195 sq ft Total Surface Area, Top-Loading, 100% No-Bypass Filtration	3 Tri-X® 65 sq ft Filters, 195 sq ft Total Surface Area, Top-Loading, 100% No-Bypass Filtration	3 Tri-X® 65 sq ft Filters, 195 sq ft Total Surface Area, Top-Loading, 100% No-Bypass Filtration
Water Care System	FreshWater® Salt System Included, Smart Monitoring System Ready	FreshWater® Salt System Included, Smart Monitoring System Ready	FreshWater® Salt System Included, Smart Monitoring System Ready	FreshWater® Salt System Included, Smart Monitoring System Ready
Electrical Requirements	230v/50 amp, 60 Hz	230v/50 amp, 60 Hz	230v/50 amp, 60 Hz	115v/20 amp, 60 Hz or 230v/50 amp*
GFCI Protected Sub-Panel	Included	Included	Included	Includes 20 amp GFCI Protected Power Cord**
Music System (Optional)	Wireless Audio System with Bluetooth® Technology	Wireless Audio System with Bluetooth® Technology	Wireless Audio System with Bluetooth® Technology***	Wireless Audio System with Bluetooth® Technology***
Water Features	BellaFontana® Fountain	BellaFontana® Fountain	N/A	N/A

* Convertible to 230v/50 amp ** Excludes Canadian Models *** Subwoofer Not Available

LIMELIGHT® COLLECTION

	PRISM™	PULSE®	FLAIR®
Seat Capacity	7	7	6
Dimensions <i>(Subject to Change)</i>	9'2" x 7'7" x 38" 279 cm x 231 cm x 97 cm	7'5" x 7'5" x 38" 226 cm x 226 cm x 97 cm	7'0" x 7'0" x 36" 213 cm x 213 cm x 91 cm
Jet Count	73	49	43
Water Capacity	525 g / 1990 L	445 g / 1685 L	335 g / 1270 L
Dry Weight	1190 lb / 540 kg	1015 lb / 460 kg	875 lb / 400 kg
Filled Weight	6795 lb / 3085 kg	5950 lb / 2700 kg	4720 lb / 2140 kg
Shell Colors	Alpine White, Desert, Ice Gray, Platinum, Tuscan Sun	Alpine White, Desert, Ice Gray, Platinum, Tuscan Sun	Alpine White, Desert, Ice Gray, Platinum, Tuscan Sun
Cabinet Colors	Coastal Gray, Espresso, Sable	Coastal Gray, Espresso, Sable	Coastal Gray, Espresso, Sable
Cabinet Type	Everwood® All-Weather Low-Maintenance	Everwood® All-Weather Low-Maintenance	Everwood® All-Weather Low-Maintenance
Step Type	Limelight Step: Coastal Gray, Espresso, Sable	Limelight Step: Coastal Gray, Espresso, Sable	Limelight Step: Coastal Gray, Espresso, Sable
Cover Colors	Black, Storm	Black, Storm	Black, Storm
Cover Lifters	CoverCradle® Included, UpRite® Compatible	CoverCradle®, CoverCradle® II, Lift n'Glide®, UpRite®	CoverCradle®, CoverCradle® II, Lift n'Glide®, UpRite®
Bottom Seal	HDPE Bottom Sheet	HDPE Bottom Sheet	HDPE Bottom Sheet
Lighting	Raio® Multi-Color LED Interior: 32 Points of Light, Plus Waterfall; Exterior: Front-corner	Raio® Multi-Color LED Interior: 32 Points of Light, Plus Waterfall; Exterior: Front-corner	Raio® Multi-Color LED Interior: 32 Points of Light, Plus Waterfall; Exterior: Front-corner
Logo Light	Hot Spring Logo Badge Diagnostic Self-Dimming Status Light	Hot Spring Logo Badge Diagnostic Self-Dimming Status Light	Hot Spring Logo Badge Diagnostic Self-Dimming Status Light
Jet Pump 1	Wavemaster® 9200 2-Speed 2.5 HP, Continuous Duty (5.2 HP, Breakdown Torque)	Wavemaster® 9200 2-Speed 2.5 HP, Continuous Duty (5.2 HP, Breakdown Torque)	Wavemaster® 8200 2-Speed 2.0 HP, Continuous Duty (4.0 HP, Breakdown Torque)
Jet Pump 2	Wavemaster® 9000 1-Speed 2.5 HP, Continuous Duty (5.2 HP, Breakdown Torque)	Wavemaster® 9000 1-Speed 2.5 HP, Continuous Duty (5.2 HP, Breakdown Torque)	Wavemaster® 8000 1-Speed 2.0 HP, Continuous Duty (4.0 HP, Breakdown Torque)
Jet Pump 3	Wavemaster® 9000 1-Speed 2.5 HP, Continuous Duty (5.2 HP, Breakdown Torque)	N/A	N/A
Jets	1 JetStream® XL Jet 1 XL Dual Rotary Jet 2 XL Single Rotary Jets 3 XL Directional Jets 7 Standard Dual Rotary Jets 4 Standard Single Rotary Jets 4 Standard Directional Jets 10 Precision® Rotary Jets 41 Precision® Directional Jets	1 XL Dual Rotary Jet 1 XL Single Rotary Jet 2 XL Directional Jets 4 Standard Single Rotary Jets 2 Standard Directional Jets 4 Precision® Rotary Jets 35 Precision® Directional Jets	1 XL Dual Rotary Jet 2 XL Single Rotary Jets 1 XL Directional Jet 6 Standard Dual Rotary Jets 2 Standard Directional Jets 31 Precision® Directional Jets
Controls	IQ 2020® Color LCD	IQ 2020® Color LCD	IQ 2020® Color LCD
Circulation Pump	SilentFlo 5000® Quiet Continuous Filtration	SilentFlo 5000® Quiet Continuous Filtration	SilentFlo 5000® Quiet Continuous Filtration
Heater	No-Fault® 4000w/230v	No-Fault® 4000w/230v	No-Fault® 4000w/230v
Filtration	2 Polyester 75 sq ft Filters, 150 sq ft Total Surface Area, Top-Loading	2 Polyester 50 sq ft Filters, 100 sq ft Total Surface Area, Top-Loading	2 Polyester 50 sq ft Filters, 100 sq ft Total Surface Area, Top-Loading
Water Care System	FreshWater® Salt System Ready, Smart Monitoring System Ready	FreshWater® Salt System Ready, Smart Monitoring System Ready	FreshWater® Salt System Ready, Smart Monitoring System Ready
Electrical Requirements	230v/50 amp, 60 Hz, Convertible to 230v/70amp*	230v/50 amp, 60 Hz	230v/50 amp, 60 Hz
GFCI Protected Sub-Panel	Included	Included	Included
Music System (Optional)	Wireless Audio System with Bluetooth® Technology	Wireless Audio System with Bluetooth® Technology	Wireless Audio System with Bluetooth® Technology
Water Features	Vidro® Waterfall LED Backlit Ribbon	Vidro® Waterfall LED Backlit Ribbon	Vidro® Waterfall LED Backlit Ribbon

	FLASH™	BEAM™ II	BEAM™ I
Seat Capacity	7	4	4
Dimensions <i>(Subject to Change)</i>	7'0" x 7'0" x 36" 213 cm x 213 cm x 91 cm	6' 8" x 6' 8" x 33" 203 cm x 203 cm x 84 cm	6' 8" x 6' 8" x 33" 203 cm x 203 cm x 84 cm
Jet Count	41	19	19
Water Capacity	360 g / 1365 L	295 g / 1115 L	295 g / 1115 L
Dry Weight	845 lb / 385 kg	700 lb / 320 kg	700 lb / 320 kg
Filled Weight	5070 lb / 2300 kg	3860 lb / 1750 kg	3860 lb / 1750 kg
Shell Colors	Alpine White, Desert, Ice Gray, Platinum, Tuscan Sun	Alpine White, Desert, Ice Gray, Platinum, Tuscan Sun	Alpine White, Desert, Ice Gray, Platinum, Tuscan Sun
Cabinet Colors	Coastal Gray, Espresso, Sable	Coastal Gray, Espresso, Sable	Coastal Gray, Espresso, Sable
Cabinet Type	Everwood® All-Weather Low-Maintenance	Everwood® All-Weather Low-Maintenance	Everwood® All-Weather Low-Maintenance
Step Type	Limelight Step: Coastal Gray, Espresso, Sable	Limelight Step: Coastal Gray, Espresso, Sable	Limelight Step: Coastal Gray, Espresso, Sable
Cover Colors	Black, Storm	Black, Storm	Black, Storm
Cover Lifters	CoverCradle®, CoverCradle® II, Lift n'Glide®, UpRite®	CoverCradle®, CoverCradle® II, Lift n'Glide®, UpRite®	CoverCradle®, CoverCradle® II, Lift n'Glide®, UpRite®
Bottom Seal	HDPE Bottom Sheet	HDPE Bottom Sheet	HDPE Bottom Sheet
Lighting	Raio® Multi-Color LED Interior: 27 Points of Light, Plus Waterfall; Exterior: Front-corner	Raio® Multi-Color LED Interior: 30 Points of Light, Plus Waterfall; Exterior: Front-corner	Raio® Multi-Color LED Interior: 30 Points of Light, Plus Waterfall; Exterior: Front-corner
Logo Light	Hot Spring Logo Badge Diagnostic Self-Dimming Status Light	Hot Spring Logo Badge Diagnostic Self-Dimming Status Light	Hot Spring Logo Badge Diagnostic Self-Dimming Status Light
Jet Pump 1	Wavemaster® 8200 2-Speed 2.0 HP, Continuous Duty (4.0 HP, Breakdown Torque)	Wavemaster® 9000 1-Speed 2.5 HP, Continuous Duty (5.2 HP, Breakdown Torque)	Wavemaster® 7000 1-Speed 1.65 HP, Continuous Duty (3.5 HP, Breakdown Torque)
Jet Pump 2	Wavemaster® 8000 1-Speed 2.0 HP, Continuous Duty (4.0 HP, Breakdown Torque)	N/A	N/A
Jet Pump 3	N/A	N/A	N/A
Jets	1 XL Dual Rotary Jet 3 XL Single Rotary Jets 1 XL Directional Jet 4 Standard Single Rotary Jets 4 Standard Directional Jets 28 Precision® Directional Jets	1 XL Directional Jet 2 Standard Single Rotary Jets 2 Standard Directional Jets 14 Precision® Directional Jets	1 XL Directional Jet 2 Standard Single Rotary Jets 2 Standard Directional Jets 14 Precision® Directional Jets
Controls	IQ 2020® Color LCD	IQ 2020® Color LCD	IQ 2020® Color LCD
Circulation Pump	SilentFlo 5000® Quiet Continuous Filtration	SilentFlo 5000® Quiet Continuous Filtration	SilentFlo 5000® Quiet Continuous Filtration
Heater	No-Fault® 4000w/230v	No-Fault® 6000w/230v	No-Fault® 1500w/115v or 6000w/230v
Filtration	2 Polyester 50 sq ft Filters, 100 sq ft Total Surface Area, Top-Loading	2 Polyester 50 sq ft Filters, 100 sq ft Total Surface Area, Top-Loading	2 Polyester 50 sq ft Filters, 100 sq ft Total Surface Area, Top-Loading
Water Care System	FreshWater® Salt System Ready, Smart Monitoring System Ready	FreshWater® Salt System Ready, Smart Monitoring System Ready	FreshWater® Salt System Ready, Smart Monitoring System Ready
Electrical Requirements	230v/50 amp, 60 Hz	230v/50 amp, 60 Hz	115v/20amp, 60Hz, Convertible to 115v/30amp or 230v/50amp
GFCI Protected Sub-Panel	Included	Included	Includes 20 amp GFCI protected power cord**
Music System (Optional)	Wireless Audio System with Bluetooth® Technology	Wireless Audio System with Bluetooth® Technology	Wireless Audio System with Bluetooth® Technology
Water Features	Vidro® Waterfall LED Backlit Ribbon	Vidro® Waterfall LED Backlit Ribbon	Vidro® Waterfall LED Backlit Ribbon

* Requires Additional 20amp Circuit Breaker. ** Excludes Canadian Models

HOT SPOT® COLLECTION

	RHYTHM®	RELAY®	PACE™
Seat Capacity	7	6	5
Dimensions <i>(Subject to Change)</i>	7'0" x 7'0" x 36" 213 cm x 213 cm x 91 cm	7'0" x 7'0" x 36" 213 cm x 213 cm x 91 cm	6'10" x 6'10" x 33" 208 cm x 208 cm x 84 cm
Jet Count	40	40	24
Water Capacity	330 g / 1250 L	340 g / 1290 L	300 g / 1135 L
Dry Weight	845 lb / 383 kg	830 lb / 375 kg	775 lb / 350 kg
Filled Weight	4820 lb / 2185 kg	4715 lb / 2140 kg	4150 lb / 1880 kg
Shell Colors	Alpine White, Pebble, Tuscan Sun, White Pearl	Alpine White, Pebble, Tuscan Sun, White Pearl	Alpine White, Pebble, Tuscan Sun, White Pearl
Cabinet Colors	Almond, Havana, Storm	Almond, Havana, Storm	Almond, Havana, Storm
Cabinet Type	Everwood® All-Weather Low-Maintenance	Everwood® All-Weather Low-Maintenance	Everwood® All-Weather Low-Maintenance
Step Type	Hot Spot Step: Almond, Havana, Storm	Hot Spot Step: Almond, Havana, Storm	Hot Spot Step: Almond, Havana, Storm
Cover Colors	Black, Chestnut, Gray	Black, Chestnut, Gray	Black, Chestnut, Gray
Cover Lifters	CoverCradle®, CoverCradle® II, Lift n'Glide®, UpRite®	CoverCradle®, CoverCradle® II, Lift n'Glide®, UpRite®	CoverCradle®, CoverCradle® II, Lift n'Glide®, UpRite®
Bottom Seal	HDPE Bottom Sheet	HDPE Bottom Sheet	HDPE Bottom Sheet
Lighting	Multi-Color LED Interior: 10 Points of Light; Exterior: 4 Corner LED	Multi-Color LED Interior: 10 Points of Light; Exterior: 4 Corner LED	Multi-Color LED Interior: 10 Points of Light; Exterior: 4 Corner LED
Logo Light	N/A	N/A	N/A
Jet Pump 1	Wavemaster® 6200 2-Speed 1.5 HP, Continuous Duty (3.2 HP, Breakdown Torque)	Wavemaster® 6200 2-Speed 1.5 HP, Continuous Duty (3.2 HP, Breakdown Torque)	Wavemaster® 6200 2-Speed 1.5 HP, Continuous Duty (3.2 HP, Breakdown Torque)
Jet Pump 2	Wavemaster® 6000 1-Speed 1.5 HP, Continuous Duty (3.2 HP, Breakdown Torque)	Wavemaster® 6000 1-Speed 1.5 HP, Continuous Duty (3.2 HP, Breakdown Torque)	N/A
Jet Pump 3	N/A	N/A	N/A
Jets	3 XL Directional Hydromassage Jets 2 XL Rotary Hydromassage Jets 3 Directional Hydromassage Jets 2 Rotary Hydromassage Jets 30 Precision® Directional Jets	3 XL Directional Hydromassage Jets 2 XL Rotary Hydromassage Jets 3 Directional Hydromassage Jets 2 Rotary Hydromassage Jets 30 Precision® Directional Jets	3 XL Directional Hydromassage Jets 2 Directional Hydromassage Jets 2 Rotary Hydromassage Jets 17 Precision® Directional Jets
Controls	IQ 2020® Mono Color LCD Panel	IQ 2020® Mono Color LCD Panel	IQ 2020® Mono Color LCD Panel
Circulation Pump	SilentFlo 5000® Quiet Continuous Filtration	SilentFlo 5000® Quiet Continuous Filtration	SilentFlo 5000® Quiet Continuous Filtration
Heater	No-Fault® 4000w/230v	No-Fault® 4000w/230v	No-Fault® 1000w/115v or 4000w/230v
Filtration	(1) Polyester 65 sq ft Filter, Top-Loading	(1) Polyester 65 sq ft Filter, Top-Loading	(1) Polyester 30 sq ft Filter, Top-Loading
Water Care System	FreshWater® Salt System Ready	FreshWater® Salt System Ready	FreshWater® Salt System Ready
Electrical Requirements	230v/50 amp, 60 Hz	230v/50 amp, 60 Hz	115v/20 amp Convertible to 115v/30 amp or 230v/50 amp, 60 Hz
GFCI Protected Sub-Panel	Included	Included	Includes 20 amp GFCI Protected Power Cord**
Music System (Optional)	Wireless Audio System with Bluetooth® Technology	Wireless Audio System with Bluetooth® Technology	Wireless Audio System with Bluetooth® Technology
Water Features	Vidro® Waterfall	Vidro® Waterfall	Vidro® Waterfall

	STRIDE®	SX®	TX®
Seat Capacity	3	3	2
Dimensions <i>(Subject to Change)</i>	7'0" x 5'5" x 29" 213 cm x 165 cm x 74 cm	6' 0" x 6' 5" x 33" 183 cm x 196 cm x 84 cm	6'0" x 6'0" x 29" 183 cm x 183 cm x 74 cm
Jet Count	20	18	11
Water Capacity	225 g / 850 L	230 g / 870 L	190 g / 720 L
Dry Weight	570 lb / 260 kg	645 lb / 295 kg	635 lb / 290 kg
Filled Weight	2975 lb / 1350 kg	3090 lb / 1400 kg	2570 lb / 1165 kg
Shell Colors	Alpine White, Pebble, Tuscan Sun, White Pearl	Alpine White, Pebble, Tuscan Sun, White Pearl	Alpine White, Pebble, Tuscan Sun, White Pearl
Cabinet Colors	Almond, Havana, Storm	Almond, Havana, Storm	Almond, Havana, Storm
Cabinet Type	Everwood® All-Weather Low-Maintenance	Everwood® All-Weather Low-Maintenance	Everwood® All-Weather Low-Maintenance
Step Type	Hot Spot Step: Almond, Havana, Storm	Hot Spot Step: Almond, Havana, Storm	Hot Spot Step: Almond, Havana, Storm
Cover Colors	Black, Chestnut, Gray	Black, Chestnut, Gray	Black, Chestnut, Gray
Cover Lifters	CoverCradle®, CoverCradle® II, Lift n'Glide®, UpRite®	CoverCradle®, CoverCradle® II, Lift n'Glide®	Lift n'Glide®
Bottom Seal	HDPE Bottom Sheet	HDPE Bottom Sheet	HDPE Bottom Sheet
Lighting	Multi-Color LED Interior: 6 Points of Light	Multi-Color LED Interior: 6 Points of Light	Multi-Color LED Interior: 4 Points of Light
Logo Light	N/A	N/A	N/A
Jet Pump 1	Wavemaster® 6200 2-Speed 1.5 HP, Continuous Duty (3.2 HP, Breakdown Torque)	Wavemaster® 6200 2-Speed 1.5 HP, Continuous Duty (3.2 HP, Breakdown Torque)	Wavemaster® 4200 2-Speed 1.0 HP, Continuous Duty (1.7 HP, Breakdown Torque)
Jet Pump 2	N/A	N/A	N/A
Jet Pump 3	N/A	N/A	N/A
Jets	1 XL Directional Hydromassage Jet 1 XL Rotary Hydromassage Jet 3 Directional Hydromassage Jets 1 Rotary Hydromassage Jet 14 Precision® Directional Jets	1 Moto-Massage® Jet 1 XL Rotary Hydromassage Jet 16 Precision® Directional Jets	1 Moto-Massage® Jet 1 Directional Hydromassage Jet 1 Rotary Hydromassage Jet 8 Precision® Directional Jets
Controls	IQ 2020® Mono Color LCD Panel	IQ 2020® Mono Color LCD Panel	IQ 2020® Mono Color LCD Panel
Circulation Pump	SilentFlo 5000® Quiet Continuous Filtration	SilentFlo 5000® Quiet Continuous Filtration	SilentFlo 5000® Quiet Continuous Filtration
Heater	No-Fault® 1000w/115v or 4000w/230v	No-Fault® 1000w/115v or 4000w/230v	No-Fault® 1000w/115v or 4000w/230v
Filtration	(1) Polyester 30 sq ft Filter, Top-Loading	(1) Polyester 30 sq ft Filter, Top-Loading	(1) Polyester 30 sq ft Filter, Top-Loading
Water Care System	FreshWater® Salt System Ready	FreshWater® Salt System Ready	FreshWater® Salt System Ready
Electrical Requirements	115v/20 amp Convertible to 115v/30 amp or 230v/50 amp, 60 Hz	115v/20 amp Convertible to 115v/30 amp or 230v/50 amp, 60 Hz	115v/15 amp Convertible to 115v/30 amp or 230v/50 amp, 60 Hz
GFCI Protected Sub-Panel	Includes 20 amp GFCI Protected Power Cord**	Includes 20 amp GFCI Protected Power Cord**	Includes 20 amp GFCI Protected Power Cord**
Music System (Optional)	N/A	N/A	N/A
Water Features	N/A	N/A	N/A

** Excludes Canadian Models

A WARRANTY YOU CAN COUNT ON

We are passionate about making the world's best hot tubs and we stand behind them with robust and comprehensive warranties designed to give you peace of mind. Our warranties are our commitment to you, and we are proud to share them up front and in detail.

	Highlife® Collection	Limelight® Collection	Hot Spot® Collection
No-Leak Shell	7 Years	7 Years	5 Years
Shell Surface	7 Years	5 Years	2 Years
Cabinet	5 Years	5 Years	2 Years
No-Leak Plumbing	5 Years	5 Years	2 Years
No-Fault® Heater	5 Years	5 Years	2 Years
Component Warranty	5 Years	5 Years	2 Years
Interior Light Assembly	2 Years	3 Years	2 Years

www.hotspring.com/warranty



Compare Spa Collections

Benefit	Features	Highlife® Collection	Limelight® Collection	Hot Spot® Collection
Massage	Moto-Massage® DX	●		
	Moto-Massage			SX & TX
	Comfort Control®	●	●	●
	SmartJet® System	●	●	Pace™
Clean Water	100% No-Bypass Filtration	●		
	Tri-X® Filters	●		
	Dual-Action Filtration		●	
	FreshWater® Smart Monitoring System	Optional	Optional	
Energy Efficiency	FreshWater® Salt System	●	Optional	Optional
	Multiple Layers of High Density Foam Insulation	●		
	FiberCor® Insulation		●	●
	Polymeric Base Pan and Substructure	●		
	Polyethylene Sealed Bottom		●	●
	SilentFlo 5000® Circulation Pump	●	●	●
	Patented Pump Shroud	●	●	
	No-Fault® Heater	●	●	●
	Custom-Fit Insulated Cover	●	●	●
	Meets CEC and APSP Energy Efficiency Standards	●	●	●
Intuitive Control	Color LCD Touchscreen Control	●		
	Color LCD Control		●	
	LCD Control			●
Lighting & Entertainment	Diagnostic Logo Light	●	●	
	Customizable LED Zone Lighting	●		
	Multi-Color LED Lighting	●	●	●
	Exterior Lighting	●	●	All except SX & TX
	Wireless Entertainment	Optional	Optional	Optional except Stride®, SX, TX

*Check with local dealer for availability.


Community


Join our community of Hot Spring® spa owners for ideas, perspectives, personal results, and more. Connect with our social channels and immerse yourself in our world.

Visit our website: [hotspring.com](https://www.hotspring.com)

Follow us on social media:

 @HotSpringSpas

 @hotspring_spas

 /hotspringspas

 @HotSpringSpas



© 2025 Watkins Wellness, 1280 Park Center Drive, Vista, California 92081. All rights reserved. Specifications, colors, and surface materials subject to change without notice. Not all features available on all products. Printed in USA. Aria®, BellaFontana® water feature, Beam™, Clean Screen®, ComfortControl® System, CoverCradle®, CoolZone™, EnergySmart® Spa, Envoy®, EverFresh®, Everwood™ Cabinet, Every Day Made Better®, Feel good. Live Well.®, FiberCor®, Flair®, Flash™, FreshWater®, FreshWater, FRESHWATER®, Grandee, Highlife®, Hot Spot®, Hot Spring®, HotSpring®, HydroPulse®, HydroStream® jet, IQ 2020®, I'm a Hot Tubber®, Jetsetter®, JetStream® jet, Lift 'n Glide®, Limelight®, Luminescence LED Light System, Moto-Massage® jet, Necessories®, Nobody Backs You Better®, No-Fault®, Pace™, Precision® jet, Prism®, Prodigy®, Pulse®, Raio®, Relay®, Rhythm®, Silent Flo 5000®, SmartJet® System, SoothingStream® water feature, Sovereign®, Stride®, The Absolute Best Hot Tub Ownership Experience®, Triumph®, Tri-X® filter, UpRite®, Vanguard®, Vanishing Act®, Vidro®, Vista®, Watkins the Home Relaxation Specialists™, Watkins Direct™, WaveMaster®, Watkins Wellness®, WeatherPro®, Virtual View™ are trademarks of Watkins Manufacturing Corp.



We print our brochures on only Forest Stewardship Council (FSC) paper. Printed in the USA on recycled paper that contains 10% post-consumer waste and is FSC certified. FSC ensures that the paper in our brochures contains fiber from well-managed and responsibly harvested forests. Please pass this catalog on or recycle again.

