

HIGHLIFE® COLLECTION

ARIA®



FreshWater®
Salt System
Included



100% Filtration
SilentFlo Circulation



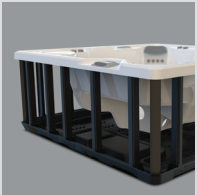
Moto-Massage® DX



Super Energy
Efficient



Color LCD
Touchscreen



Polymer Substructure
& Base Pan



freshwater IQ
System Ready



Shown with Alpine White Shell
and Linen Cabinet

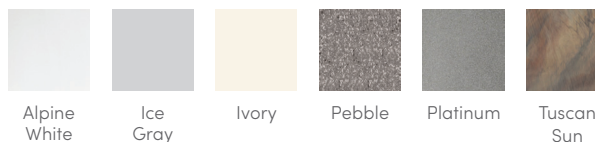
People	Seating	Jets	Voltage
5 Seats	Lounge	42 Jets	230 V

Size
7'3" x 7'3" x 36" | 221 cm x 221 cm x 91 cm

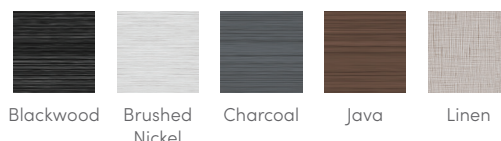
Water Care
FreshWater® Salt System Included



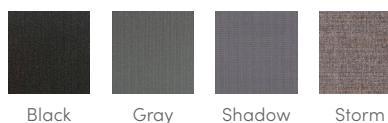
SHELL COLORS



CABINET COLORS



COVER COLORS



CABINET AND SHELL COLOR OPTIONS*

Cabinet Colors	Java	Charcoal	Blackwood	Linen	Brushed Nickel
Shell Colors	Alpine White Ice Gray Ivory Tuscan Sun Pebble	Alpine White Ice Gray Platinum Tuscan Sun Pebble	Alpine White Ice Gray Platinum	Alpine White Ivory Tuscan Sun Pebble	Alpine White Ice Gray Platinum

LEGENDARY MASSAGE

42 Personalized-Control Jets

- 2 Moto-Massage® DX (2)
- 2 SoothingStream®
- 4 JetStream®
- 2 Rotary Hydromassage
- 2 HydroStream®
- 2 Rotary Precision®
- 26 Directional Precision®

EASY WATER CARE

Water Care System	FreshWater® IQ System Salt System Included Smart Monitoring System Optional
Filtration System	100% No-bypass Filtration Exclusive, High-flow Tri-X® Filters 325 sq. ft. Filtration Area

LEADING ENERGY EFFICIENCY

Jet Pump 1	Wavemaster® 9000; One-speed, 2.5 HP Continuous Duty, 5.2 HP Breakdown Torque
Jet Pump 2	Wavemaster® 9200; Two-speed, 2.5 HP Continuous Duty, 5.2 HP Breakdown Torque
Circulation Pump	SilentFlo® 5000 Quiet Continuous Filtration
Heater	No-Fault® 4,000 W / 230 V
Insulation	Multiple Layers of Foam Insulation; Certified to California Energy Commission (CEC) and APSP 14 energy efficiency standards for portable spas
Cover	WeatherPro™ 4" Tapered Custom-Fit with Hinge Seal

SIZE

Dimensions 7'3" x 7'3" x 36" / 221 cm x 221 cm x 91 cm

CAPACITY

Seating Capacity 5 seats with lounge
Water Capacity 365 gallons / 1,400 liters
Weight 680 lbs. / 310 kg dry; 4,600 lbs. / 2,110 kg filled**

ADDITIONAL FEATURES

Smart Spa Technology*	Hot Spring Spas App Powered by the Connected Spa Kit
Water Feature	BellaFontana® with 3 illuminated arcs of water
Cover Lifters*	CoverCradle®, CoverCradle II, Lift 'n Glide®, or UpRite®
Steps*	Highlife Collection Steps (Blackwood, Charcoal, Java, Linen)
Entertainment*	Bluetooth® Wireless Sound System
Control System	IQ 2020® with Color LCD Touchscreen 230 V / 50 amp, 60 Hz (Includes GFCI protected sub-panel)
Lighting System	Luminescence® multi-color four-zone
Cooling System*	CoolZone™

*No special orders or shell substitutions available. Actual colors and products may vary from print representation. See dealer to verify.
 **Includes water and 5 adults weighing 175 lbs. each.