

HIGHLIFE® COLLECTION

ENVOY®



FreshWater®
Salt System
Included



100% Filtration
SilentFlo Circulation



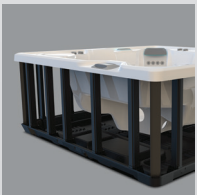
Moto-Massage® DX



Super Energy
Efficient



Color LCD
Touchscreen



Polymer Substructure
& Base Pan



Shown with Alpine White Shell
and Charcoal Cabinet

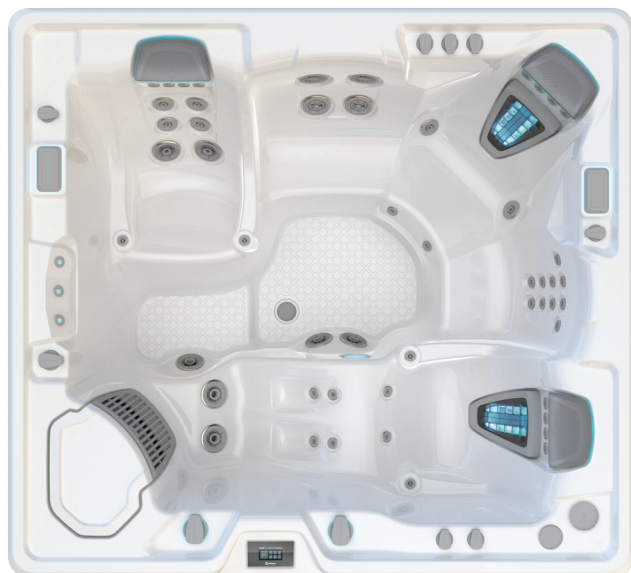
| | | | |
|---------------|----------------|-------------|----------------|
| People | Seating | Jets | Voltage |
| 5 Seats | Lounge | 55 Jets | 230 V |

Size
8'4" x 7'7" x 38" | 254 cm x 231 cm x 97 cm

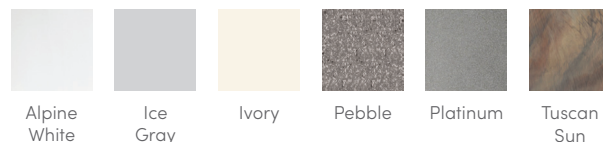
Water Care
FreshWater® Salt System Included

HIGHLIFE® COLLECTION

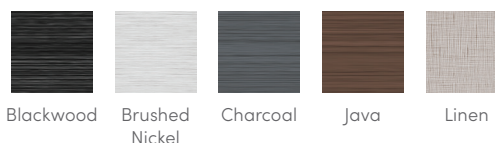
ENVOY®



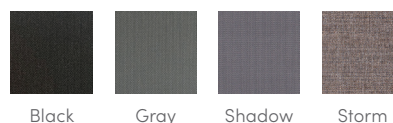
SHELL COLORS



CABINET COLORS



COVER COLORS



CABINET AND SHELL COLOR OPTIONS*

| Cabinet Colors | Java | Charcoal | Blackwood | Linen | Brushed Nickel |
|---------------------|---|--|--------------------------------------|---|--------------------------------------|
| Shell Colors | Alpine White Ice Gray Ivory Tuscan Sun Pebble | Alpine White Ice Gray Platinum Tuscan Sun Pebble | Alpine White Ice Gray Platinum | Alpine White Ivory Tuscan Sun Pebble | Alpine White Ice Gray Platinum |

LEGENDARY MASSAGE

55 Personalized-Control Jets

- 2 Moto-Massage® DX (2)
- 2 SoothingStream®
- 5 JetStream®
- 2 Rotary Hydromassage
- 2 Directional Hydromassage
- 6 HydroStream®
- 4 Rotary Precision®
- 30 Directional Precision®

EASY WATER CARE

Water Care System FreshWater® IQ System
Salt System Included
Smart Monitoring System Optional

Filtration System 100% No-bypass Filtration
Exclusive, High-flow Tri-X® Filters
325 sq. ft. Filtration Area

LEADING ENERGY EFFICIENCY

Jet Pump 1 Wavemaster® 9000; One-speed, 2.5 HP Continuous Duty,
5.2 HP Breakdown Torque

Jet Pump 2 Wavemaster® 9200; Two-speed, 2.5 HP Continuous Duty,
5.2 HP Breakdown Torque

Circulation Pump SilentFlo® 5000 Quiet Continuous Filtration

Heater No-Fault® 4,000 W / 230 V

Insulation Multiple Layers of Foam Insulation; Certified to California
Energy Commission (CEC) and APSP 14 energy efficiency
standards for portable spas

Cover WeatherPro™ 4" Tapered Custom-Fit with Hinge Seal

SIZE

Dimensions 8'4" x 7'7" x 38" / 254 cm x 231 cm x 97 cm

CAPACITY

Seating Capacity 5 seats with lounge

Water Capacity 455 gallons / 1,725 liters

Weight 785 lbs. / 355 kg dry; 5,455 lbs. / 2,480 kg filled**

ADDITIONAL FEATURES

Smart Spa Technology Hot Spring Spas App Powered by the Connected Spa Kit

Water Feature BellaFontana® with 3 illuminated arcs of water

Cover Lifters* CoverCradle®, CoverCradle II, Lift 'n Glide®, or UpRite®

Steps* Highlife Collection Steps (Blackwood, Charcoal, Java, Linen)

Entertainment* Bluetooth® Wireless Sound System (Optional)

Control System IQ 2020® with Color LCD Touchscreen
230 V / 50 amp, 60 Hz
(Includes GFCI protected sub-panel)

Lighting System Luminescence® multi-color four-zone

Cooling System* CoolZone™

*Optional Accessories

*No special orders or shell substitutions available. Actual colors and products may vary from print representation. See dealer to verify.
**Includes water and 5 adults weighing 175 lbs. each.